

Subscriptions to *Landscape Ecology* available at reduced rate for US-IALE members!
<http://www.springer.com/life+sci/ecology/journal/10980>

US-IALE Membership Application

Name: _____ New Member: Yes _____ No _____ Telephone Number: _____
Mailing Address: _____ Website URL: _____
E-mail Address: _____ DUES 2009 Regular Member (\$45.00) \$ _____ 2009 Student Member (\$50.00; Please include copy of student ID) \$ _____
DONATIONS
Student Award Fund (To support Best Student Presentation Award) \$ _____
Foreign Travel Award (Aids int'l attendance at US-IALE meetings) \$ _____
General Fund (General financial support of US-IALE) \$ _____
JOURNAL SUBSCRIPTION FOR STUDENTS ONLY
Landscape Ecology (\$60.00) \$ _____
Print Version _____
On Line Version _____ (Students need to register on www.springerlink.com as an individual user and receive a MetaPress ID.)
Report this ID number here: _____
TOTAL \$ _____
RECEIPTS will be sent out via e-mail (if available) unless checked here:
Please send this form with a check (U.S. \$ on a U.S. bank only), purchase order, or money order (payable to US-IALE) for the total amount to:

US-IALE Membership Secretary, Appalachian Laboratory, 301 Braddock Rd., Frostburg, MD 21532

US-IALE Officers

Jianguo (Jack) Liu | President, 2008-2010
Center for Systems Integration and Sustainability
Department of Fisheries and Wildlife
115 Manly Miles Bldg.
Michigan State University
East Lansing, MI 48823-5243, USA
(517) 432-5025
jliu@panda.msu.edu

Dean Urban | President Elect 2009-2010
Nicholas School for the Environment
Duke University
Durham, NC 27708, USA
(919) 613-8076
deanu@duke.edu

Colleen Hatfield | Secretary, 2007-2011
Biological Sciences, Holt Hall
California State University
Chico, CA 95929, USA
(530) 898-4235
chatfield@csuchico.edu

Lisa Schulte | Treasurer, 2008-2010
Natural Resource Ecology and Management
Iowa State University
Ames, IA 50011, USA
(515) 294-7339
lschulte@iastate.edu

Michael Wimberly | Councillor-at-Large, 2009-2011
GISc Center of Excellence
South Dakota State University
Brookings, SD 57007-3510, USA
(605) 688-5350
Michael.Wimberly@sdstate.edu

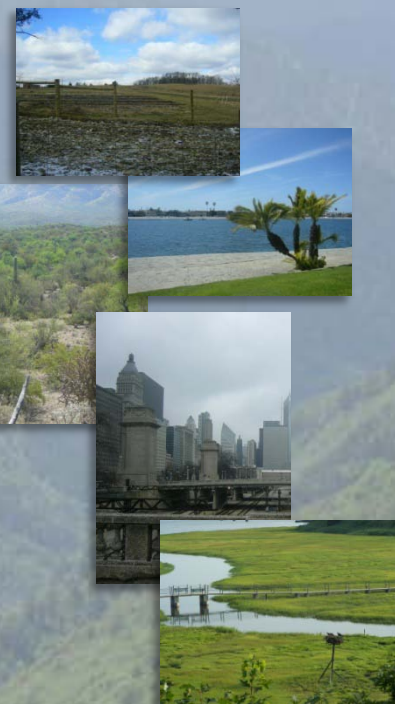
Sarah Gergel | Councillor-at-Large, 2008-2010
Department of Forest Sciences and Centre for Applied Conservation Research
3024 - 2424 Main Mall
University of British Columbia
Vancouver, BC V6T 1Z4, Canada
(604) 827-5163
sarah.gergel@at.ubc.ca

Matt Baker | Councillor-at-Large, 2008-2010
Department of Geography & Environmental Systems
211 Sondheim Hall
University of Maryland, Baltimore County
1000 Hilltop Circle
Baltimore, Maryland 21250 USA
(410) 455-3759
mbaker@umbc.edu

Tabitha Graves | Student Representative, 2009-2011
Northern Arizona University, PhD student
School of Forestry PO Box 15018
Flagstaff, AZ 86011
(406) 396-4162
tabgra@yahoo.com

Namrata Shrestha | Student Representative, 2008-2010
University of Toronto at Mississauga
Department of Geography, South Building 1156 A
3359 Mississauga Rd.
Mississauga, Ontario L5L 1C6, Canada
(905) 828-5273
namrata.shrestha@utoronto.ca

International Association for Landscape Ecology- U.S. Regional Association



Please visit us at www.usiale.org

US-IALE

Mission of US-IALE

The purpose of US-IALE is to foster landscape ecology in the United States, provide a link among practitioners in landscape ecology within the United States as well as the international community, and promote interdisciplinary research and communication among scientists, planners, and other professionals concerned with landscape ecology.

Low Cost of Membership

- Student Member- \$30
- Regular Member- \$45

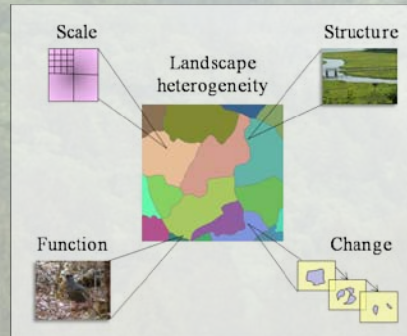
About Landscape Ecology

“Landscape Ecology is a discipline that studies the relationship between the spatial patterns in ecological systems and how those systems function.” Eric Gustafson (US Forest Service)

“What is the most promising paradigm or model today to sustain both nature and people? Of the six to eight possibilities that come to mind, none seems as promising as landscape ecology. We all need a vision on which to collaboratively hang our hats ... and change the world.” Richard Forman (Harvard University)

Benefits of Membership

- Discount on subscription to *Landscape Ecology* journal, the flagship journal in the rapidly developing fields of ecology and sustainability science of landscapes
- Discount on registration fee for annual meetings, which include plenary talks from leaders in the field, symposia on emerging research topics, extensive networking opportunities, and engaging field trips
- IALE and US-IALE newsletters, which include feature articles on the latest research findings, updates on future meetings, progress reports from officers, and other news from the field
- Networking capability via member website, which provides efficient and powerful avenues for scholars from all over the world to interact and collaborate
- Access to professional development workshop resources designed by student leaders in concert with expert landscape ecologists that provide guidance in career development topics such as grant-writing, comparison of employment options, and interview skills



US-IALE Annual Meetings

- Is What Humans Do Natural?, 25th Anniversary Meeting (Athens, Georgia, April 5-9, 2010)
- **Best student presentation awards given at each meeting- only members are eligible to apply****

Upcoming 8th IALE World of Congress

- Landscape Ecology for Sustainable Environment and Culture (Beijing, China, August 18-23, 2011)

Facts about US-IALE

- By-laws established 1986
- NASA-MSU professional enhancement awards granted since 1998 for students to attend US-IALE conferences (~20/yr)

Websites

- US-IALE: www.usiale.org
- IALE Portal: www.landscape-ecology.org
- Landscape Ecology: <http://www.springer.com/life+sci/ecology/journal/10980>
- NASA-MSU Professional Enhancement Awards: <http://www.csis.msu.edu/NASA-MSU.htm>